

BUTERE DISTRICT -2008
COMPUTER STUDIES 451/ 1
MARKING SCHEME

Section 8

- 1 i) Information - Data that has been processed
- ii) Information technology – The tools (machines) and the technical know how that is used to process data and generate information
- iii) Information systems- The procedures/ programs that data is transformed through to generate information

2 Assemblers – Are translators that are used to convert (translate) Assembly language to machine language

Compilers – Translator that convert the whole source code into machine code

- ii) Source code- set of instructions or program code written in a particular programming language
Object code- Is the set of instructions that have been translated into machine code

3. LPT USB
Slow in data transmission fast in transmission
Support only one type of device can support a number of devices

- 4 a) Magnets – demagnetize the magnetic disk and may lead to lose of data
- ii) Water - may spill on the metallic parts/ electronic parts and hence cause rusting or short circuit the system.
- 5 a) Use of anti- radiation shield on the screen
b) Use of LCD screens instead of CRT
c) Proper lighting
d) Proper screen resolution

- 6 a) Source of information (government, agriculture, education health)
- b) Sending and Receiving mail
- c) Centre for commerce (buying and selling of goods)

- 7 a) Speed of the output device
- b) Nature of the output

- 8 a) Optical mark reader
- b) OCR
- c) OBR
- d) MICR

ii) Digital camera

- iii) Mouse
- b) Joystick

8 a	ROM	RAM
	-Contents are manufacturer defined	-User defined
	-Permanent	-temporary

b)	Disadvantage	Advantage
	i) Expensive	i) contents are undefined
	ii) Volatile	ii) fast

9 a)	<u>Data privacy</u>	<u>Data security</u>
	Prevention of data against unauthorized access	Prevention of data against destruction

10 The future is through use of computer monic human intelligence in order to manage industries with little human intervention

11. Easy to code
Fast in application

- | | | |
|----|---|--|
| b) | <u>p. pseudo. Code</u> | <u>Data flow diagram</u> |
| | The English statement that request the code | The diagrammatic
Representation on one movement of
of data/ processing of data in a system |

12. Editing tools- Tools used to create and edit objects / graphics
Formatting tools- Tools used to enhance the appearance of the graphics

13

- – Supervise the working of the IT staff dept & implement preparing budget for the dept.
- Keeping department inventory records up- to- date
- Ensure that tasks in the IT department are done

14 Hastens the flow of information across the globe (globalization)

15. Installation of anti – virus

Use of passwords

Audit trail

Fire wall

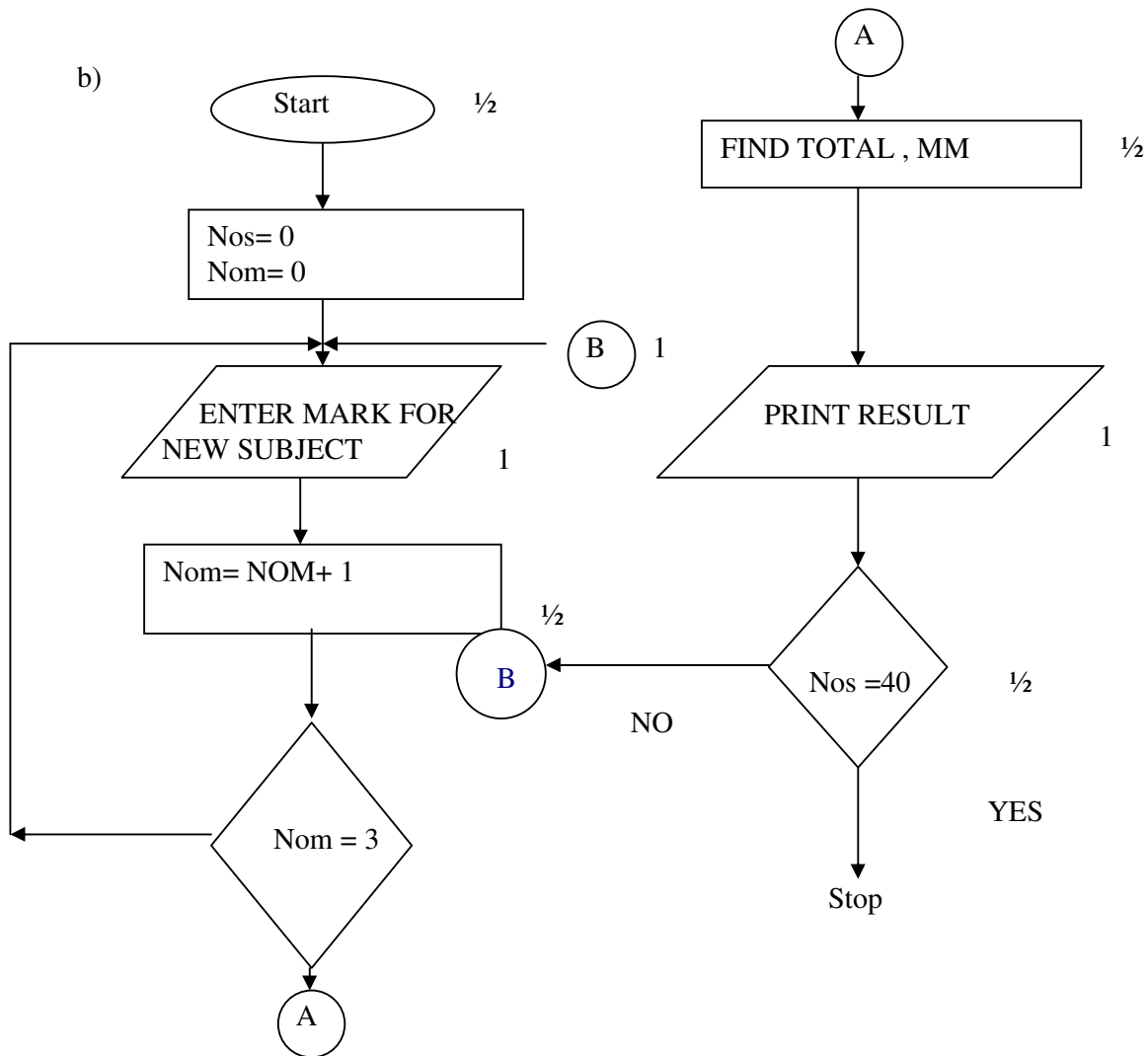
Section B

16 i) Third generation

- FORTRAN
- PASCAL
- COBOL
- BASIC
- C
- Ada

▪ ii)

- OOPs
- HTML
- JAVASCRIPT
- VB script



- c)
- Start
 - Initialize the number of subjects to 0
 - Initialize the number of students to 0
 - Ensure main for the first subject for me first student
 - Repeat till the 3rd subject
 - Calculate total
 - Calculate Average
 - Print Results
 - Repeat till the No. of students equal to 40

Stop

- | | | |
|----|--|--------------------------------------|
| 17 | <u>Guided</u> | <u>unguided</u> |
| | a) Transmission that is directional | Transmission that is not directional |
| b) | Connects computer
Connects network | |
| c) | Linking mobile phone in communication
Transfer of data from one point to another | |
| d) | Most of work done manually
Hate message sent through mobile phone
Poor storage of election results | |

- | | | |
|----|--|--|
| 18 | BCD
4- Bit code
Allows representation of
16 character
Used in simple electronic devices
Advantage
Fast in processing as more than one
Processor is used | Edcdic
-8- bit code
-Allow representation
of 256 characters
-Primarily used in IBM computers
Disadvantage
Expensive and maintain
- Requires high memory |
|----|--|--|

iii) Use of a server in LAN/ WAN to run connected clients

- iv)
 - Simulation in scientific experiments in the science subjects
 - Managing the academic program through processing of results
 - Office management (account, record keeping)
 - Research through the internet instead of relying primarily on the library

- 19 Is a careful study of an information system by expert in order to establish weak points in the system so that could lead to security threats and weak access points for crinestheus
- ii)

- Data encrypting
- Log files
- fire walls

b) Worm – Is a virus that infects the computer system. Can be controlled using anti- virus software .

C) Real- time

Distributed data processing

Time sharing

Batch processing

Multi processing

Multi programming

Interactive processing

20 Worksheet – The component in which data values are entered

Workbook- A group of worksheets

Filtering – Finding and working with a subject of data in a list

Sorting - Arranging data in an ordered way (ascending or descending)

b) Clicking the undo command

c) = C2 x 10/100)

= C4 + D 4)

d) i)

- Using the hand
- Zoom
- pointor

ii)

- Sharing information through the internets
- Use of ICT as income generating project.