

Marking scheme
Computer studies
451 / 1

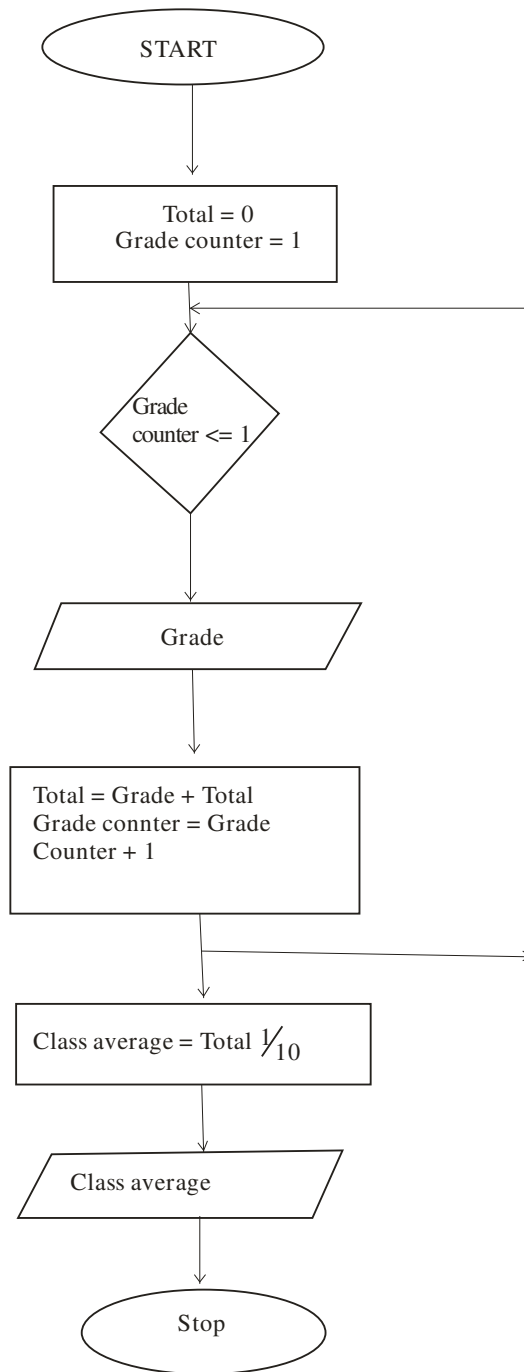
Section a

1. – Main Memory (RAM)
 - Input and output devices / ports
 - The processor
 - Secondary storage devices
 - Communication device

(Any 1 x ½= 2 Marks)
2. a. It is an hardcopy output device. They are mainly used in the fields of Engineering and architecture for producing graphic output on papers
b. – Flat bed plotter
 - Drum plotter
3. i. Identify – moving the text away from the margin i.e 1st line, full indent, hanging indent
ii. Alignment – refers to how text is lined up on the page relative to the right or centre of the page
iii. Footnote – are few notes / text found at the beginning of a page
iv. End note – are notes / text found at the bottom of a page
4. – Expert systems
 - Natural language processing
 - Voice recognition
 - Voice synthesis
 - Robotics
5. – COM ports are used for serial cables
 - LPT ports are used for parallel cables connection
6. – Suitability of accumulating data
 - Response time
 - Cost of initial installation and operations
 - Ease of development and subsequent maintenance
7. – Avoiding overcrowding of either machines or users in the room
 - Ensuring that the room has enough ventilation points like windows
 - Installing air conditioners
 -
8. – Optical disks have larger storage area
 - Data stored in optical disks is more stable and permanent
 - Data stored in optical disks cannot be altered
9. i. – Careful study of an information system by experts to establish all weaknesses in the system that could lead to security threats
ii. These are special files that keep a record (log) of events on the use of computers and resources of an information system.
iii. Combination of letters and characters that deter unauthorized users of computer from accessing data
iv. Combination of letters and characters that deter unauthorized users of computers from accessing data

10. – Gas plasma
 - Electro – luminiscet
 - Thin film transistors (TFT)
 - Liquid crystal displays
11. – A process of generating personalized letter / documents by e.g letter with an existing data source such as address book.
12. – Primary file (main document)
 - Secondary file (data soure)
 - Merged file (data source)
13. – Processor speed
 - Memory capacity
 - Cost
 - Warranty
 - User needs
 - Upgradeability . compatibility
 - Portability
14. – Sorting
 - Filtering
 - Forms
 - Total / subtotal function
15. – Changing of text colour
 - Changing of font size
 - Changing of don't style
 - Alignment

16.



- b. – Desk checking – involves going through the program while still on paper before entering it in the program editor.
 - using debugging utilities
 - Using test data – programmer carries data with errors to test whether the system will come to a halt
- c. – If then
 - If ThenElse
 - Nested if
 - Case selection
- d. – Document is easier

- System maintenance is significantly easy
- testing is easier and more comprehensive
- Flexibility – integration with other systems
- Easy to debug

17. a. $(2^0 \times 1) + (2^1 \times 1) + (2^{-1} \times 1) + (2^{-3} \times 1)$
 $= 2 + 1 + 0 + 0.25 + 0.125$
 $= 3.375_{10}$

ii. $(2^0 \times 1) + (2^{-1} \times 1) + (2^{-1} \times 1) + (2^{-2} \times 1) + (2^{-4} \times 1)$
 $2 + 1 + 0.5 + 0 + 0.125 + 0.0625$
 $= 36.875_{10}$

iii. $(2^0 \times 1) + (2^1 \times 1) + (2^2 \times 1) + (2^{-2} \times 0) + (2^{-3} \times 1) + (2^{-4} \times 0) + (2^{-5} \times 1)$
 $4 + 2 + 1 + 0.5 + 0 + 0.125 + 0 + 0.03125$
 $= 7.65625_{10}$

- b. i. Back up data from external storage media
 ii. Control access to data by enforcing security measures
 iii. Design interface that minimize chances of invalid data entry
 iv. Using deceives that capture data at source
- c. i. One can reach many respondents easily
 ii. Since they are filed and returned in privacy more responses are possible
 iii. Saves analysts time during investigation especially where residents are geographically scattered
 iv. Questions can be presented consistently to all respondents without biasness
 v. Are best suited because no details as long or long answers required but only straight forward answers.
- d. Recycle bin contains the already deleted files folders and can be restored if users need item

18. a. - Has high bandwidth hence high carrying capacity
 - Its immune to electromagnetic interference
 - Cover large distance because of low attenuation
 - Very secured because of low untappable

- b. Dynamic ram is slow while static is fast
 Dynamic needs refreshment while static doesn't need
 Dynamic loses its content while even if power is still on
 While static keeps content provided power is still on

- c. i. update – updates data in a table
 ii. Append query – adds data in a table from one or more labels
 iii. Make table query – deletes specified records from one or more tables
- d. Source program is a program code that the programmer enters in the program editor that is not yet translated into machine reachable form while the object as a program code that is in machine readable form
- e. Distinguish between a mouse pointer and a insertion point. The insertion point is a blinking vertical bar indicating where the text will be inserted as you type. While the mouse pointer is an arrow or object inform of a picture that is used to pint on the task to be performed on application window

19. a. – enforce regular changes of passwords
 - Have a minimum length of passwords
 - Carry out spot checks to ensure passwords are not written down and kept by the computer
 - Passwords should contain both letters and numbers

- Don't use same passwords on different computers
 - b. – Input
 - Out put
 - Process / CPU
 - Quite simply input
 - c. – How to install, start and run the system
 - Interface i.e how the system appears when running
 - How to carry out various tasks
 - Error correction and troubleshooting guide
 - e. – Java script
 - Vb script
 - HTML
 - Hypertext processor
20. a. – Questionnaires
- Interviews
 - Observations
 - Note taking
 - Study of available recorded / documents
 - Tape recording
- b. i. – Process of transferring information from a remote computer to a local storage
- ii. Text or picture on an electronic document especially webpage, that causes other web pages to open when the link is clicked
- iii. These are many applications that enable a person to access the internet
- iv. Companies that offer internet services to end users
- c. – Sorting refers to arranging data in a pre-defined order either ascending and descending while filtering is a quick and efficient method of finding and working with a subject of data within a list
- d. i. A mail sent to many people indiscriminately
- ii. A flat circular plate covered in magnetic which is able to store data on concentric tracks
- iii. Refers to a modem fixed on the motherboard.
- f. Refers to windows icons mouse and pointing devices found on graphical user interfaces